

Z5000



small character

- ▶ Excellent print quality and high resolution
- ▶ Up to 5 lines with height range from 0.8 to 14 mm
 - ▶ Visible double flushing with solvent recycling
- ▶ Reduced consumption thanks to innovative vapour condenser
- ▶ Advanced Hydraulic system with high efficiency and reliability
- ▶ High degree of IP65 protection for use in all arduous industrial environments



technical features

Z5000



printing characteristics

Up to 5 lines of print
Characters height from 0.8 to 14 mm (0,032" - 0,56")
Line speed capability: up to 300 mt/min (984 ft/min)
Print rate: up to 2136 ct/sec
250 messages storage
Up to 250 characters storage per message
Selectable lines vertical gap
Font Matrix: 5x5, 7x5, 9x7, 15x10, 16x10, 24x16 and 32x18
Bold factor up to 8 times
Simple Logo creation and printing
50 Logos storage
Automatic calendar and expiration date print
Incrementing/decreasing product counters up to 9 digits
Repeat print – message function
Printing in all moving directions
Tower print function (Text rotation of 90°)
DIN print for cables sector
Negative print function
Print throw distance up to 90 mm (3,54")

bar codes

2/5 Industrial • UPC-A • CODE 39 • EAN 13 • CODE 128 (A,B,C)
• EAN 128 (A,B,C) • 2D – Datamatrix • ITF (A,B,C)

control unit characteristics

Membrane keyboard solvent resistant
Blue WYSIWYG Display with high contrast 240x128 pixels
Stainless Steel structure AISI 304
Protection IP65
Conduit length: 4mt (13,1ft)

general features

Single Start/Stop button
Automatic cleaning in both Start up and Shut down
Vapour recovery system for low make up consumption
Print parameters stored within each message
Keypad access with password
Operator selectable foreign language prompts
Report function for executed printing counter
Messages storage with 8 digits alphanumeric text

printing head

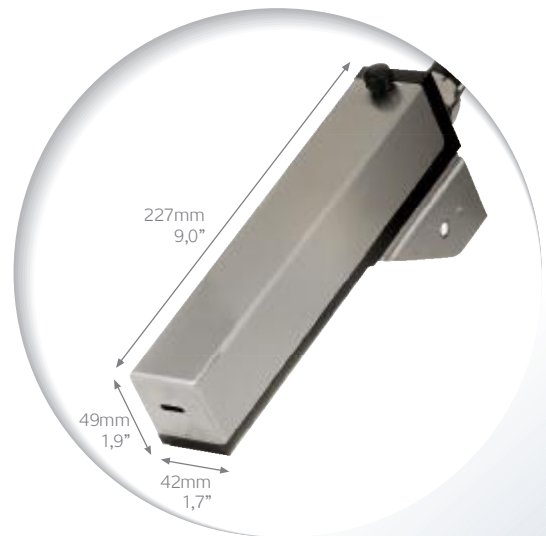
Micro Print Nozzle for high quality resolution print (optional)
Hermetically sealed printhead components
Auto-phasing of ink stream for consistent print quality
Dimensions: 227mm x 42 mm x 49 mm (9,0" x 1,7" x 1,9")
Conduit inlet at 90° (optional)
Internal Supply Positive Air Function

external connections

Serial connection RS232 and RS485/422
Sensor management for product reading
System ready output
Shaft Encoder input for variable speed production lines
External alarm outputs with traffic light column
Parallel interface BCD

environment/electrical requirements

Temperature: from 5° to 45°C (40° - 113°F)
Humidity: 10 - 90% (non-condensing)
Single Phase, 85 - 240Vac, 50 - 60Hz, 200VA



Zanasi S.r.l.
41049 Sassuolo (MO) Italy
Via Marche, 10
Tel. +39 0536 999711
Fax +39 0536 999765
www.zanasi.it - info@zanasi.it

Zanasi USA
Brooklin Park, Minneapolis MN 55428 - USA
8601 73rd Avenue North, Suite 38
Tel. +1 763 5931907
Fax +1 763 5931941
www.zanasiusa.com - info@zanasiusa.com

Zanasi (Guangzhou) Co. Ltd
Zhongcun KaiFaQu A Qu, Panyu
511495 Guangzhou, China
Tel. +86 20 61962001
Fax +86 20 23833211
www.zanasicchina.com - info@zanasicchina.com

 **ZANASI**[®]
INDUSTRIAL INK-JET PRINTING SYSTEMS